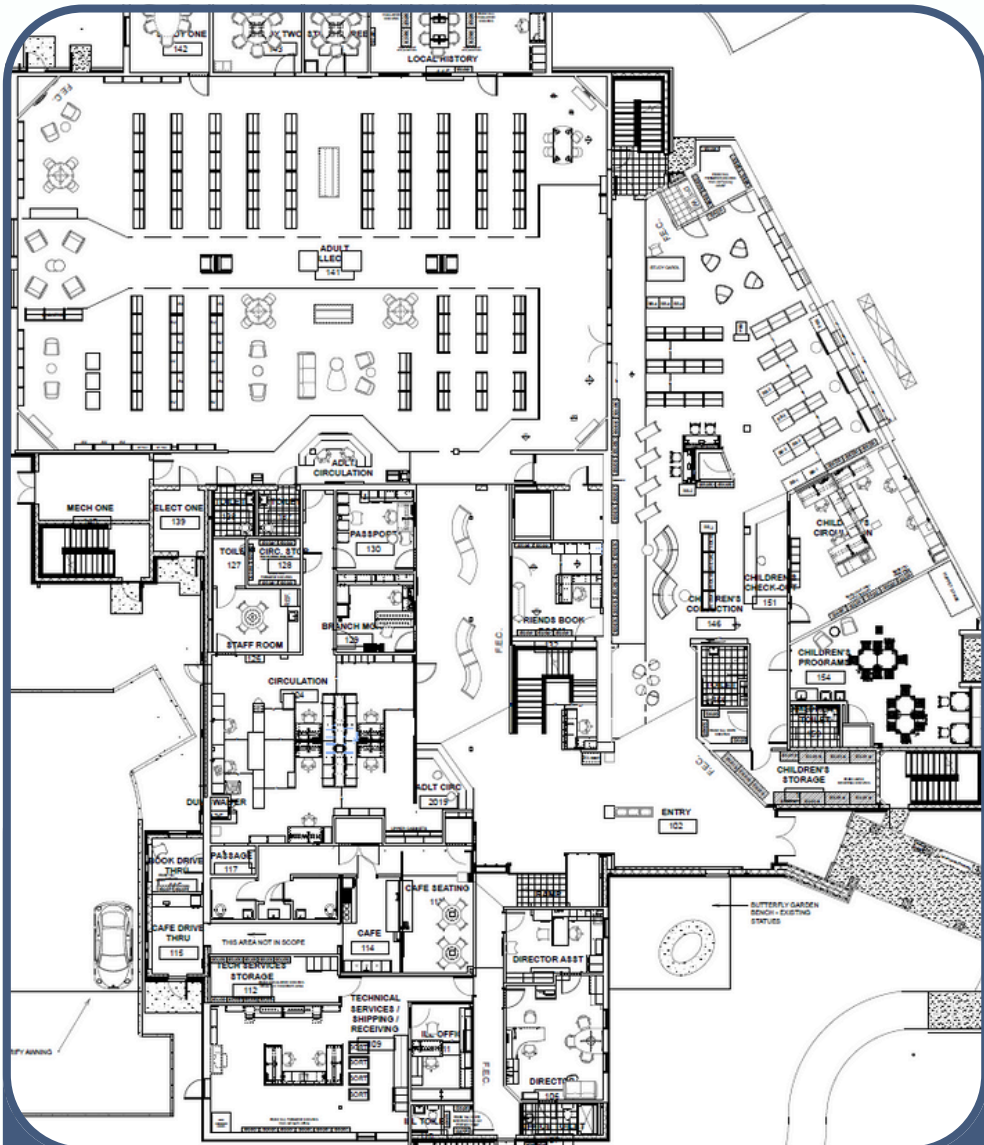
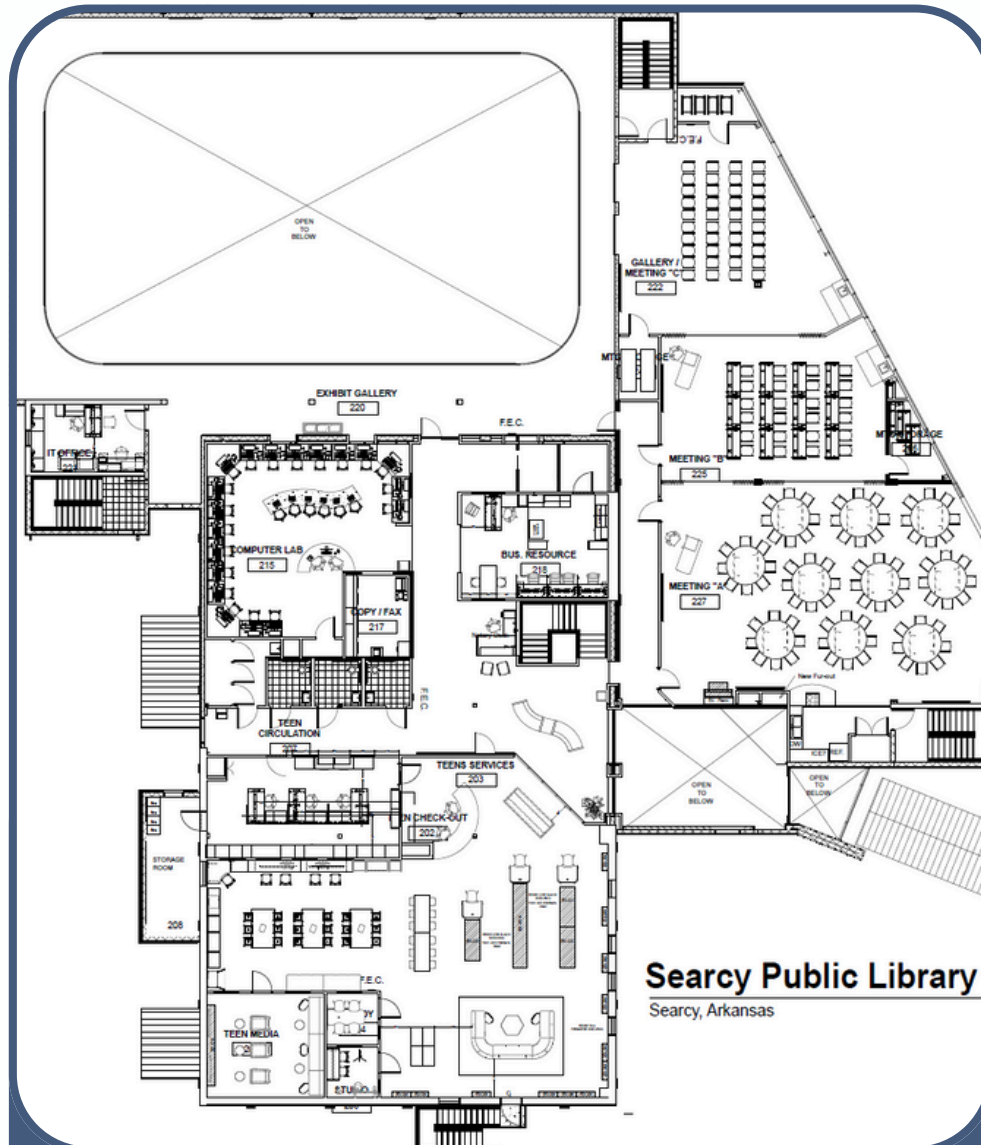


Janet & Larry Crain

MEMORIAL LIBRARY



FIRST FLOOR



SECOND FLOOR



The Janet & Larry Crain Memorial Library is the newly renovated public library to the Searcy, Arkansas Community. Our furniture dealership was selected for this remodel based on successful previous projects, as well as our skilled team and large breadth of lines; but what would soon come to head is that the best team was selected for the job because of our drawing program capabilities and talented design staff.

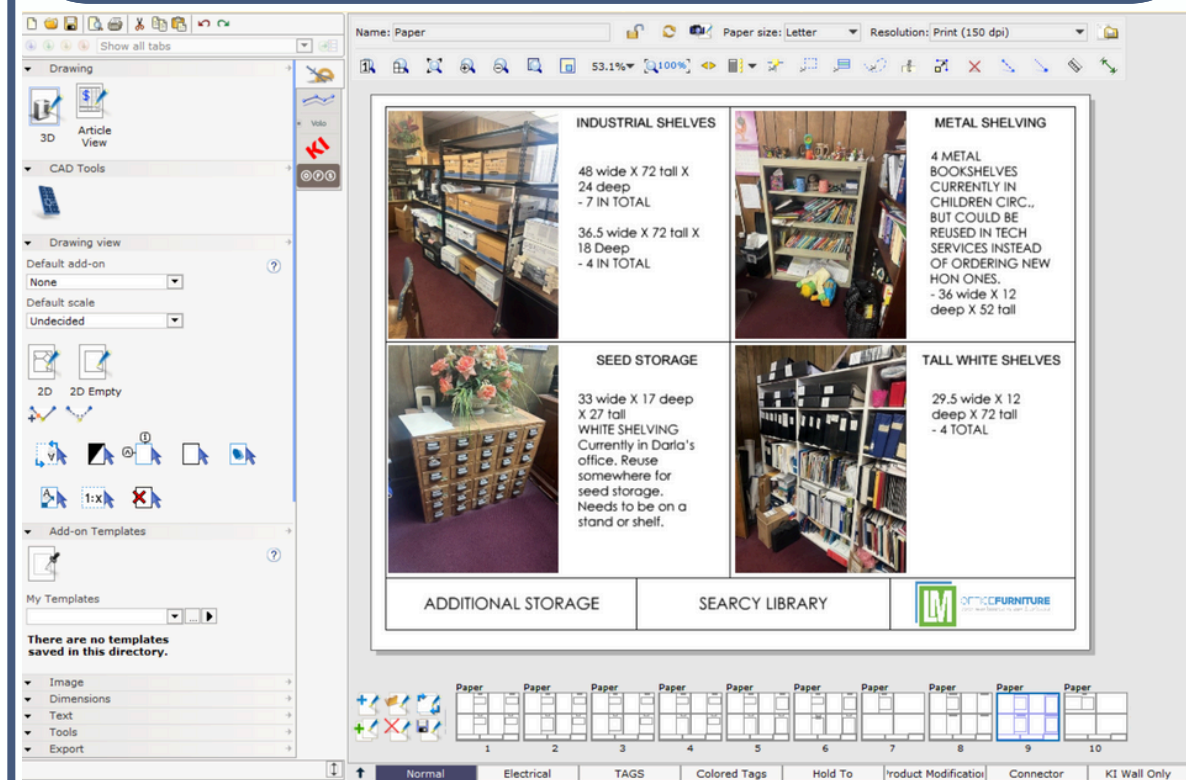
How our team uses CET Designer to execute large and complex projects really helps us stand out from our competition. We were very excited to prove ourselves to an architect, A&D Designer, and end user we had never worked with before. We were eager to show them all CET Designers capabilities and how crucial the program would be in the execution of the complex furniture package. We knew before we began that CET was going to eliminate a lot of time and stress from everyone's workloads, which is the biggest success. Time is money!

EXISTING ITEMS

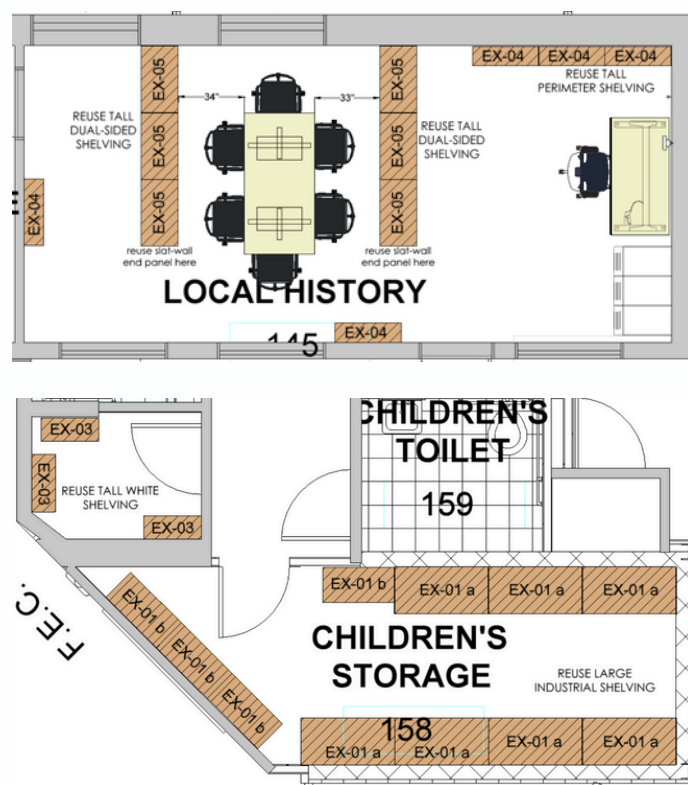
In the beginning, we were given what felt like a generous budget, but that budget quickly dissolved the further into the design process we got. Especially since we were using the funds for not just furniture, but also for several acoustical products, display slat-walls, and accessories. We were asked to cut down the overall total price by 30%. This meant we were going to have to take inventory of the libraries current furniture pieces that were in good enough condition to reuse and would fit the aesthetic of the new designed space. CET Designer was extremely helpful in maneuvering this curveball!

Several tools offered by CET Designer were imperative in including so many existing items mixed with the new furniture.

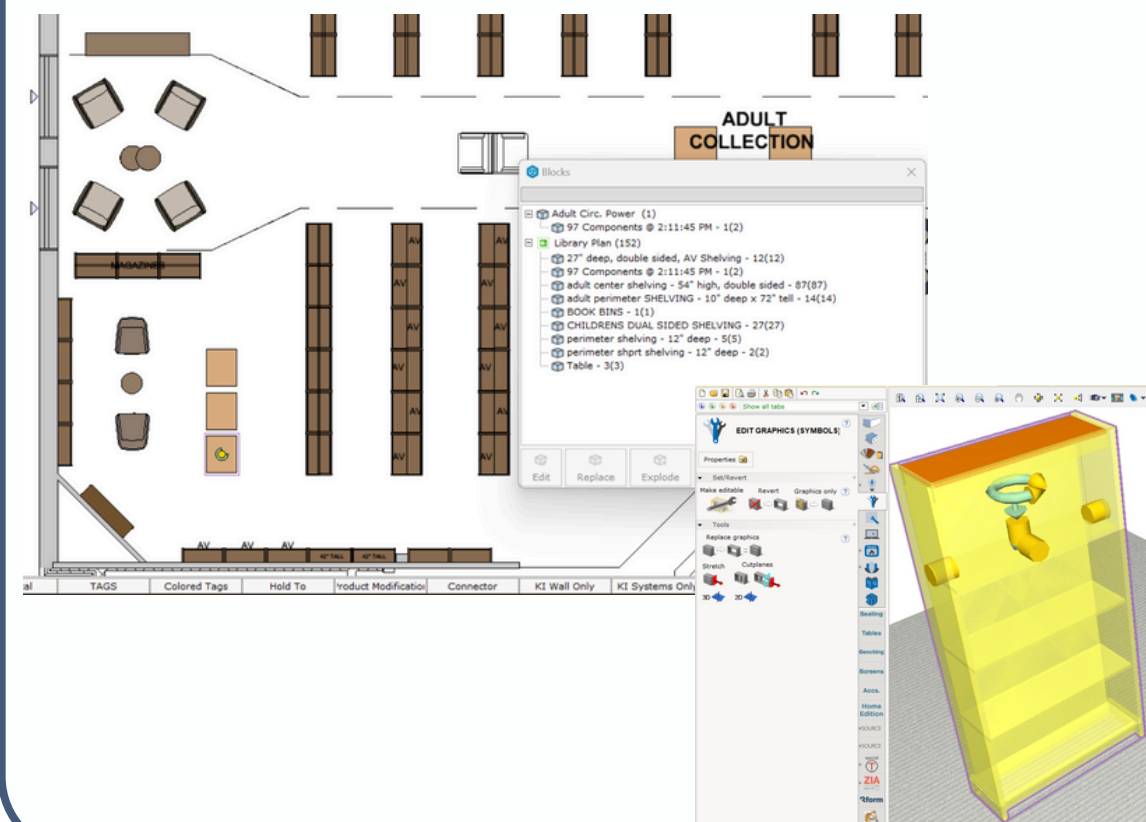
Rather than using Word, Excell, or another program, Inventory sheets were made within the **Calculation View** of the drawing so everything could be kept together and easily accessed during the design process. It gave the whole team peace of mind knowing these sheets were attached to the active furniture plan.



Part Tagging and labeling each Existing Item was incredibly easy thanks to CET Designer! Every existing bookcase, book cart, or any type of furniture needing to be implemented into the new space was given a label and then blocked. The existing pieces were then Part Tagged as "Existing" and easily *filtered* out of the pricing.



Using **Blocks** was very helpful when working with existing pieces. When making an adjustment to a block, it auto populates the adjustment to all of the other blocks sprinkled in the drawing. Time saver! We were able to use symbols from manufacturers and apply **Edit Graphics** in order to manipulate the product to mimic our existing peices in both 2D and 3D.



NEW ITEMS

When it comes to creating innovative spaces, having the proper tools is crucial. Drawing in CET Designer on this complex of a project was unbelievably critical in its success. The A&D Designer quit using her Revit model pretty early on in the design process because things she would intend to do in Revit we could do in half the time within CET. Remember, time is money! Not only were we able to quickly drop in products and make material selections, but we were able to make adjustments on the fly; whereas, our A&D Designer would have to make notes of changes to make in the meeting and work on them later, away from the end user. Although Revit is more furniture friendly now than before, CET Designer is made to support us furniture experts!

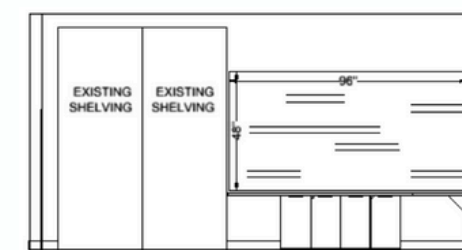
“ Whenever we would live design with the end user, I would say- We are going to use the furniture dealerships fancy and awesome drawing program because it is better and quicker than mine! This design program saved so much time and really wowed all the employees of the Library. ”

-Toni Wyre Interior Designer and Owner of Design Wyre

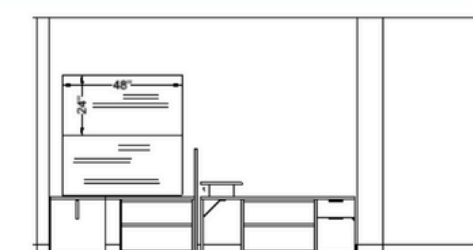
The employees of the Library were very passionate about the overall design of the space, but even more so about their individual work environments. After applying information from the initial meeting, our follow up meeting consisted of **Live Designing** with each individual staff member. Even though this was a lengthy day, it would have been impossible to wrap this up in a day with any other drawing program! Employees were mind blown when we could make adjustments to their concerns and needs in real time! And because we were able to do this in live design, all of the office spaces did not require a rendering for approval!



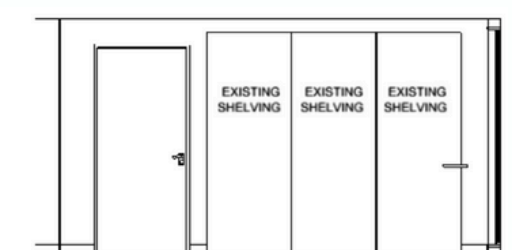
We applied several acoustical products and slat-panels to walls throughout the library. Some of these manufacturers had smart tools and some did not; regardless, we were able to easily show the librarian how these items would look on the walls with the **Elevation** tool. The **Dimension tool** allowed for a clear description of the sizing of each panel, while also showing our installer where cuts in the field would need to be made.



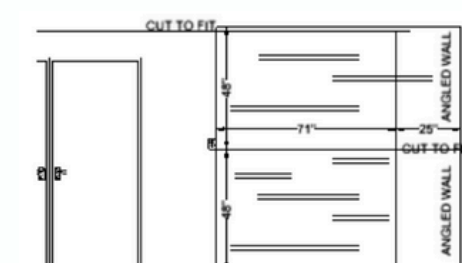
Elevation A



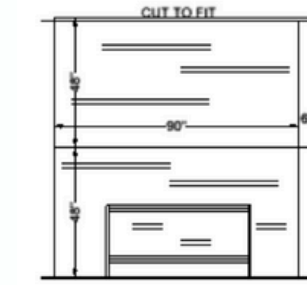
Elevation B



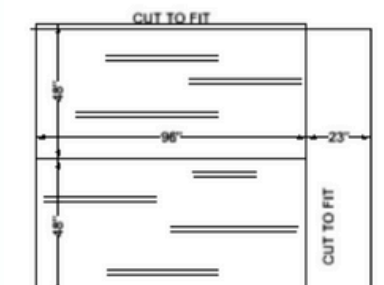
Elevation C



Elevation D



Elevation E



Elevation F

