

# TOSH

## THE ORTHOPAEDIC & SPINE HOSPITAL

The Orthopaedic & Spine Hospital at UAMS Health is the most specialized of its kind in Arkansas, offering patients access to the latest technology and most innovative care delivered by UAMS Health's premier team of orthopaedic, spine, and pain management experts who are focused on reducing pain, improving mobility, and most importantly, get them back to living their lives.

## OUR PARTNERSHIP + LIVE DESIGN

L&M has partnered with UAMS's design/facilities team many times throughout the years, but no project can compare to the TOSH building we had the pleasure of working on. From the beginning, UAMS & Cromwell Architects & Engineers had L&M looped in and working with them to make sure this was going to be an efficient and well-planned project. We have also had the pleasure of working with Cromwell on other projects within in our company, and they know our favorite way to work is through Live Design (and I think it's their favorite too). The TOSH project meetings we had were 95% Live Design meetings - they would last anywhere from **1.5 to 6 hours**. We had a pretty stressful timeline getting 4 floors of furniture drawn, rendered, quoted, and ordered in 8 months, **but we did it!** The amount of possible errors we would have encountered if we would have done the project planning over email and/or phone is scary. The Live Design capability cuts our chances for errors, miscommunication, misunderstanding, etc. in half (if not more); that's why we rely so heavily on that ability and we know our customers are very impressed with the process - it even helps us win future jobs. We would get almost a whole floor's worth of changes done in one meeting - they would see that change in real time and know that it's what they wanted without me having to re-render, re-print plans, and send to them for approval.

## CET + SPEC = LIFESAVER

Throughout the drawing process, UAMS was anxious to know our running total for the project. We were constantly checking the Calc View window during our 1.5+ hour Live Design appointments to make sure we were still on track. Also, this project had to be on contract, so we had to split all of our manufacturers up into their own section - thankfully CET allows us to make multiple Article Views and filter them by Manufacture, Tags, Part Numbers, etc. to make this a breeze. This made it easy for me to get running totals for each manufacturer and be able to export them all individually and import into Spec to start the quoting process. We had a total of **26 quotes (and still adding to it)!!**

#	Part Number	Company	Catalogue	Options	Complete	Description	Upcharge	Quantity	List	Ext. List	
<b>Carolina</b>											
<b>2001 WAITING</b>											
1	682-1	Carolina	CSO		Y	Seek 29x34x44 Chair		12	\$5,437.00	\$65,244.00	
2	810-24RD-20	Carolina	CSO		Y	X&O Tables 24x24x20 Cylinder Table		8	\$2,733.00	\$21,864.00	
3	C202141	Carolina	CSO		Y	Dess 27x29x34 Lounge Chair with Arms		8	\$4,092.00	\$32,736.00	
									<b>Total 2001 WAITING</b>	<b>\$119,844.00</b>	
<b>2101 &amp; 2111 CONSULT</b>											
4	202141	Carolina	CSO		Y	Dess 27x29x34 Lounge Chair with Arms		4	\$4,092.00	\$16,368.00	
									<b>Total 2101 &amp; 2111 CONSULT</b>	<b>\$16,368.00</b>	
<b>2108 OBSERVATION</b>											
5	810-24RD-20	Carolina	CSO		Y	X&O Tables 24x24x20 Cylinder Table		2	\$2,733.00	\$5,466.00	
									<b>Total 2108 OBSERVATION</b>	<b>\$5,466.00</b>	
<b>2112-2114 CONSULT</b>											
6	C202141	Carolina	CSO		Y	Dess 27x29x34 Lounge Chair with Arms		6	\$4,092.00	\$24,552.00	
									<b>Total 2112-2114 CONSULT</b>	<b>\$24,552.00</b>	
<b>2412 STAFF LOUNGE</b>											
7	MM-271416HBCD	Carolina	CMM		Y	Mile Marker, 27x14x16 Double Wall Hanging Base Cabinet with Doors		4	\$896.00	\$3,584.00	
8	MM-5414TL	Carolina	CMM		N	Mile Marker, 54x14.25x1 Laminate Worksurface		2	\$407.00	\$814.00	
									<b>Total 2412 STAFF LOUNGE</b>	<b>\$4,398.00</b>	
<b>2414 PHYSICIAN LOUNGE</b>											
9	810-24RD-20	Carolina	CSO		Y	X&O Tables 24x24x20 Cylinder Table		4	\$2,733.00	\$10,932.00	
									<b>Total 2414 PHYSICIAN LOUNGE</b>	<b>\$10,932.00</b>	
										<b>Total Carolina</b>	<b>\$181,560.00</b>
<b>ESI Ergonomic Solutions</b>											
<b>2201 APP OFFICE</b>											
10	FCH4C	ESI Ergonomic Solutions	ESI		Y	Desktop Power Module Including (2) AC Power and (1) USB-A Outlet, (1) USB-C Outlet. Mounts on Top or Under Desk		1	\$293.00	\$293.00	
									<b>Total 2201 APP OFFICE</b>	<b>\$293.00</b>	
<b>Summary</b>											
<b>Components</b>										<b>\$1,354,170.30</b>	
Discount										\$0.00	
Packing										\$0.00	
Assembly										\$0.00	
<b>Total</b>										<b>\$1,354,170.30</b>	
No Aspect walls found in the drawing.											
No Beyond walls found in the drawing.											

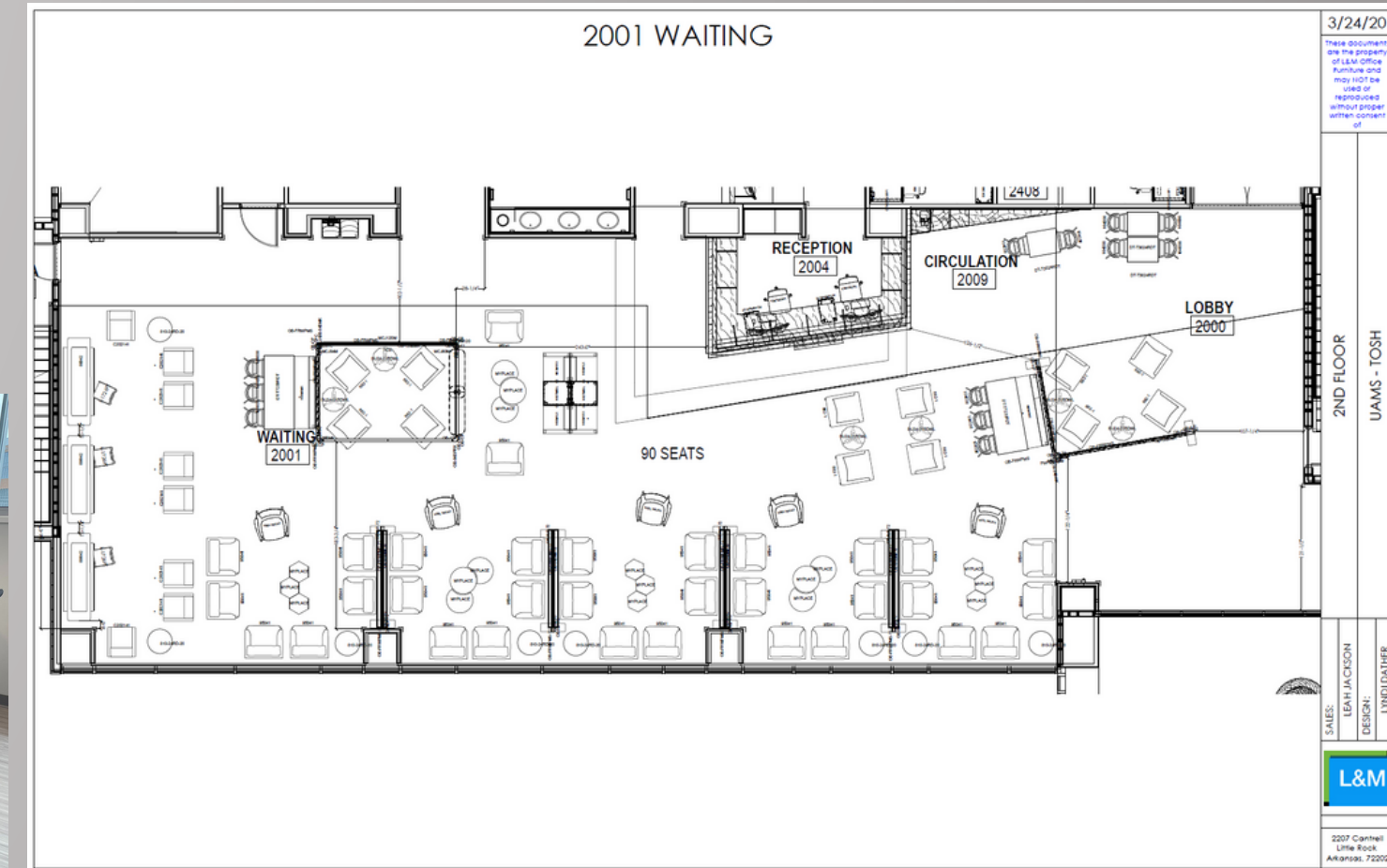
# RENDERING VS REALITY

One of my favorite things to do is show the black & white 2D floorplan vs the birdseye view rendering in the furniture proposal. This was not only helpful to the customer, but to our installers as well. In this project, we had different fabric combos on the same furniture pieces, so it was important to show which fabrics go where for the install.



# CREATING SPECIALS IN GET

I love being able to modify part numbers and give them their special quote #'s & pricing. It makes it easier to keep up with the running total of the project knowing I have the correct list pricing for special pieces - especially for Live Design Meetings. Creating specials within a symbol also makes it easier for me to locate and update if needed in my Spec worksheet when I'm quoting.



VS



Part Number	Options	Description	Quantity	Base	Upcharge	Total	Options code
KSY01643909810		XSEDE_END PANEL ADJ HEIGHT, LAMINATE	1	(\$0.01)	\$1,501.01	\$1,501.00	
Total						\$1,501.00	

Part Number	Description [en-US] (Default)	Price [USD]
1		
2		
3		
4		
5		
6		
7		

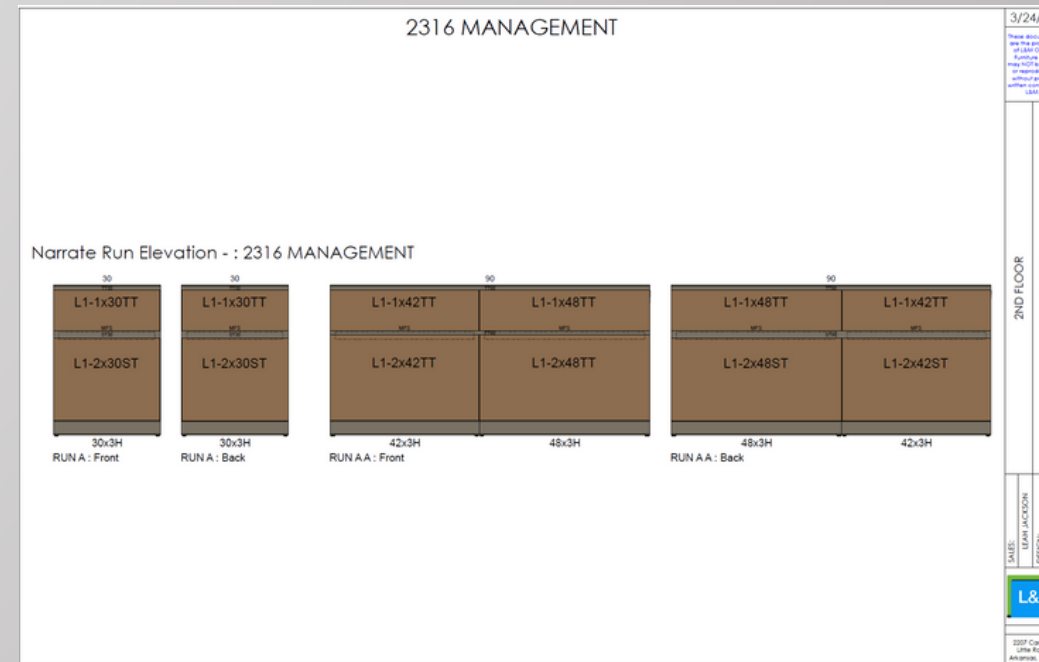
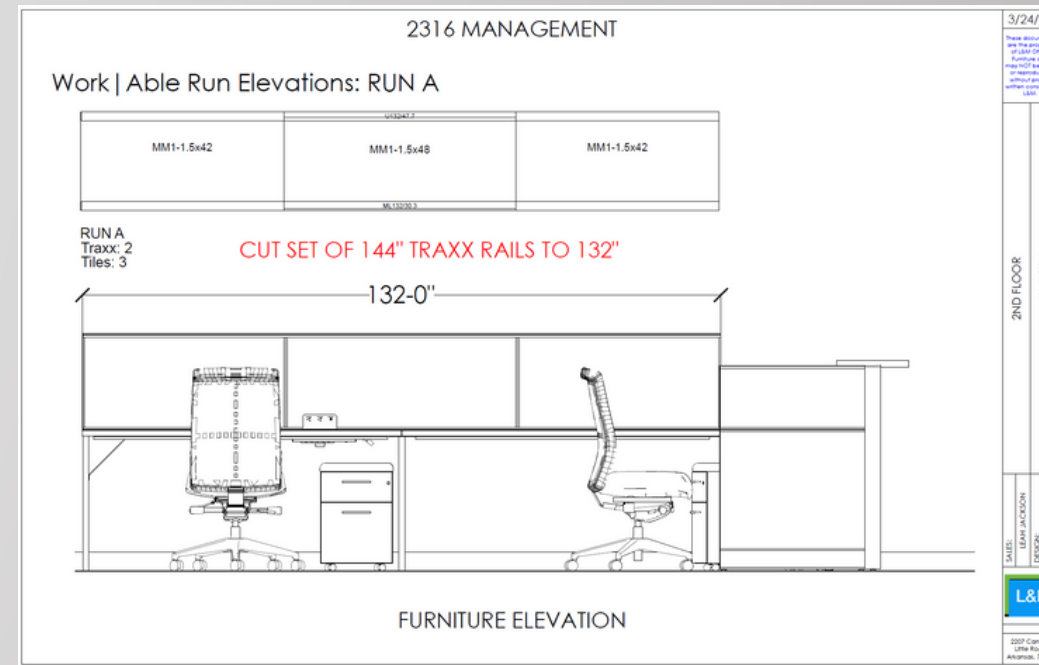
Part Number	Description	Options
1	KSY01643909810	XSEDE_END PANEL ADJ HEIGHT, LAMINATE
2		
3		
4		
5		
6		
7		
8		
9		

# INSTALL PLANS

CET's ability to include any detail/information you could think of for install plans has made my life so much easier. Showing 2D plans, panel runs, elevations, and renderings for one area has reduced the amount of texts & phone calls I get from installers/project managers by about 75%. On a large project like this, I wanted to make sure I included every single detail I possibly could, and thankfully CET provided me with that ability. I can honestly say that this project would not have been possible without CET - all of the organization, details, realistic renderings, etc. helped us sell this project to our customer and made it possible for us to plan, change, budget, quote, and install the entirety of this beautiful hospital.

# MEETINGS, MEETINGS, AND MORE MEETINGS

Over the course of this project, we met with the UAMS designer & the A&D designers multiple times a week to get it completed. We even had a couple meetings over Zoom with the head doctors/surgeons and nurses to show them the work in progress in my CET drawing. Having the ability to meet with others that are out of state and show them what their space is going to look like is a huge bonus - they all were very impressed with this capability. I believe this gives us an advantage in projects and puts the end users at ease knowing they are seeing exactly what they are going to get.



# PROJECT IMPORTANCE

The UAMS TOSH facility is the biggest project I have ever completed and been a part of as a designer. Only being in the industry for 4 years, I was a little nervous to work on this large, complex project. I knew I was capable of tackling this project because I would say I know my way around CET pretty well, but knowing that this hospital was going to be the first of its kind in Arkansas and would be praised for its innovative technology and talented surgeons I knew that everything had to go perfectly. We all know it's probably impossible for a project of this size to go absolutely perfect, but I knew that I was in good hands with CET's advanced capabilities and ability to encompass an entire project in one software.

“OUR NATIONALLY RECOGNIZED EXPERTS LOOK FORWARD TO THE ENHANCED ABILITY THIS BUILDING PROVIDES TO COMBINE THEIR MULTIDISCIPLINARY SKILLS WHILE USING THE LATEST CUTTING-EDGE TECHNOLOGY,” SAID C. LOWRY BARNES, M.D., CHAIR OF THE DEPARTMENT OF ORTHOPAEDIC SURGERY IN THE UAMS COLLEGE OF MEDICINE. “PERHAPS MORE IMPORTANTLY, WE KNOW THAT PATIENTS AND THEIR FAMILY MEMBERS WILL APPRECIATE THE WAYS THIS ALLOWS US TO STREAMLINE SERVICES IN A COMFORTABLE, EASY-TO-NAVIGATE ENVIRONMENT.”

# THANK YOU, CET!

CET not only made this beautiful project possible - it made it come to life in real time. All of the different quotes, drawings, renderings, lock & key lists, installation packets, elevations, etc. would not have been so organized and easy to access if it wasn't for CET. I love having everything all in one program and being able to export things with ease into another program if I need to. It was so important to have everything easily accessible and exportable for the UAMS designer and the A&D designers - that is what made this project so easy to work on with other people. I have loved working in CET for the last 4 years and bringing people's spaces to life. All of our clients have always been very impressed with the CET software and the projects we complete for them - so thank you CET for helping us help others!

