

A NEW WAY TO PROPOSE FLOORING

For many years, Workspace has partnered with a local architect firm, contracting out our design services, as they do not have an in-house interior designer. Not only does this involve selecting and specifying the furniture, but also includes specifying building finishes, which is outside our normal services.

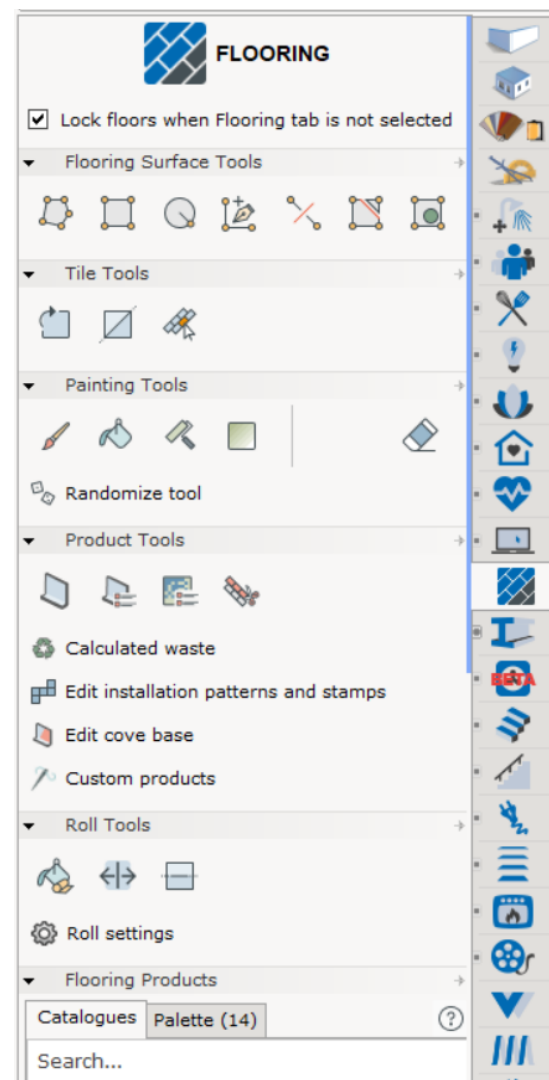
When it came to building finishes, we were required to select the flooring, as well as design the flooring layout for the space. With our resources limited, we relied heavily on our flooring manufacturers to help us with deliverables, which severely limited us to certain manufactures and only being able to show certain flooring types. This also meant we were on the manufacturer's timeline, having to wait days to receive deliverables, and any change putting us back into the bottom of the queue.

There had to be a better way to go about specifying flooring but investing in a flooring software would require money and time to train which is hard to justify when it's not something you do everyday.

INTRODUCING THE FLOORING EXTENSION

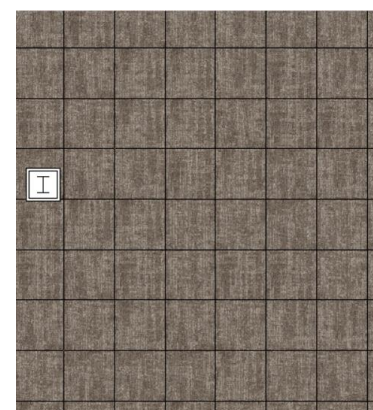
When Configura introduced the new Flooring Extension, it seemed to be the answer to all of our problems. There was no extra cost and learning how to use the extension was quick and easy.

I was able to produce similar looking deliverables that we were receiving from the manufacturers, while having many freedoms we weren't used to having.

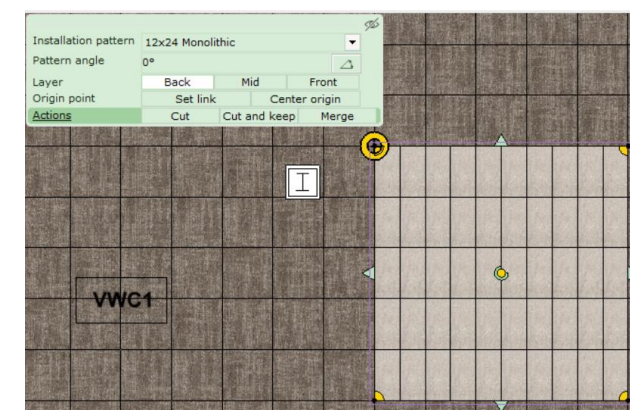
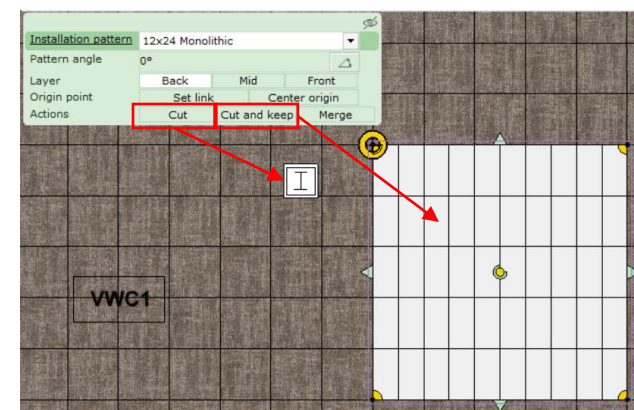


WORKING WITH THE FLOORING EXTENSION

Placing the flooring worked similarly to the "Carpets and Coverings" only it offered more options. One major limitation I often had when working with Carpets and Coverings was when there was a floor covering in the middle of another floor covering. With the Cut and Keep action available, I can easily cut in a different floor. This tool is also very helpful when cutting out where columns, walls or built-ins lay.



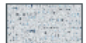
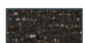
BEFORE



AFTER

WORKING WITH THE FLOORING EXTENSION

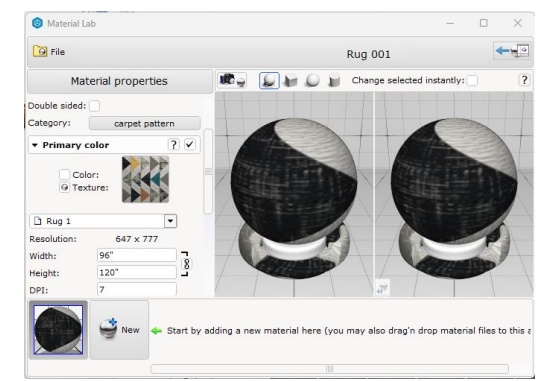
Often times when working with the architect firm we are required to come up with a budget for the flooring. The flooring legend makes it easy to find square footage while setting up the drawing for the future when the flooring is selected. You can use any of the custom or pre-loaded flooring products and apply to the layout. The flooring legend will then tell you square footage for all product used.

CarpetA_Rectangle	
	Lt_Grey 18 x 36" 854 tiles 3,843 ft ²
	Orange 18 x 36" 289 tiles 1,301 ft ²

Total Square Footage:	3843
	9
Total Square Yards:	427
10% Overage:	469.7
Square Yards per Carton:	8
	58.713
Total Cartons Needed:	59

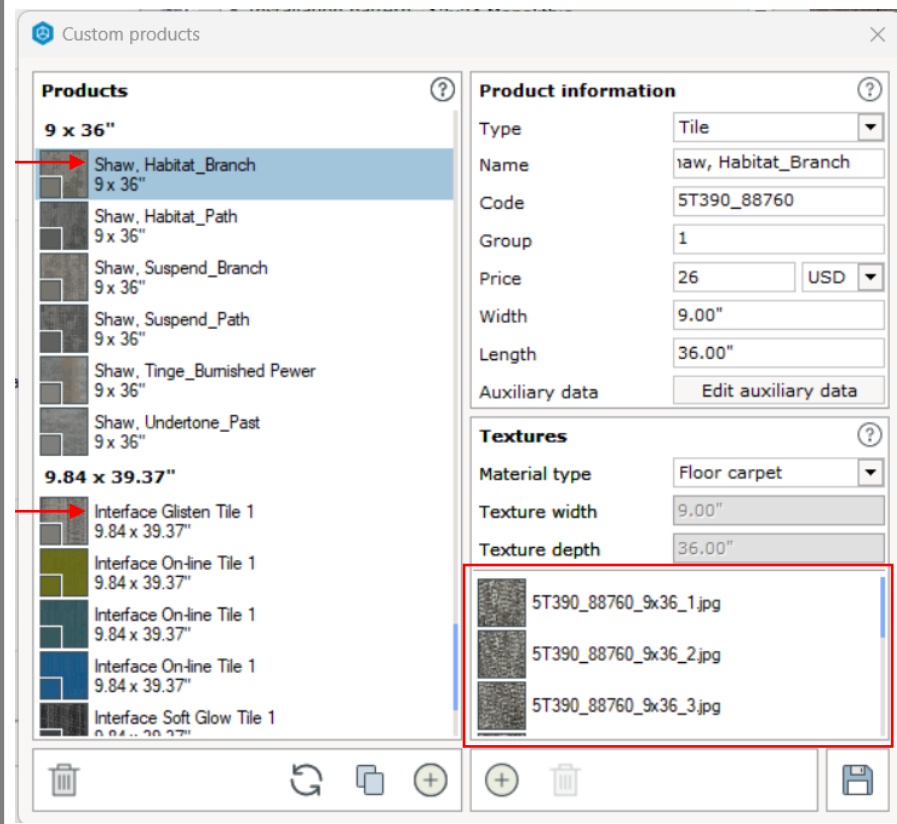
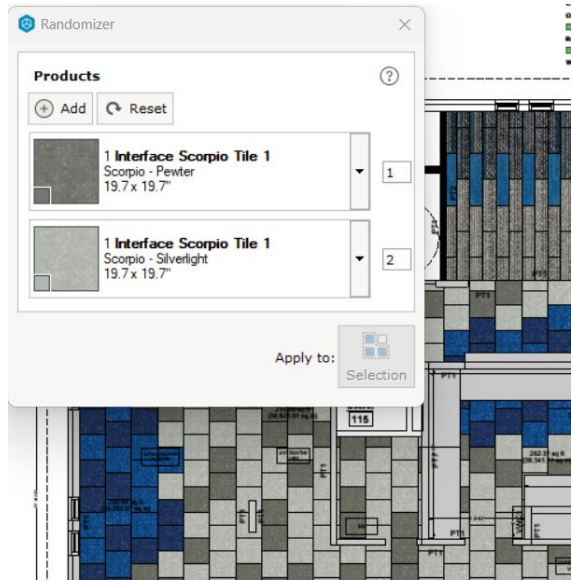
From there I plug the total square footage into a formula to come up with total cartons needed. Multiply that by \$X.XX to get your total flooring budget.

OLD WAY



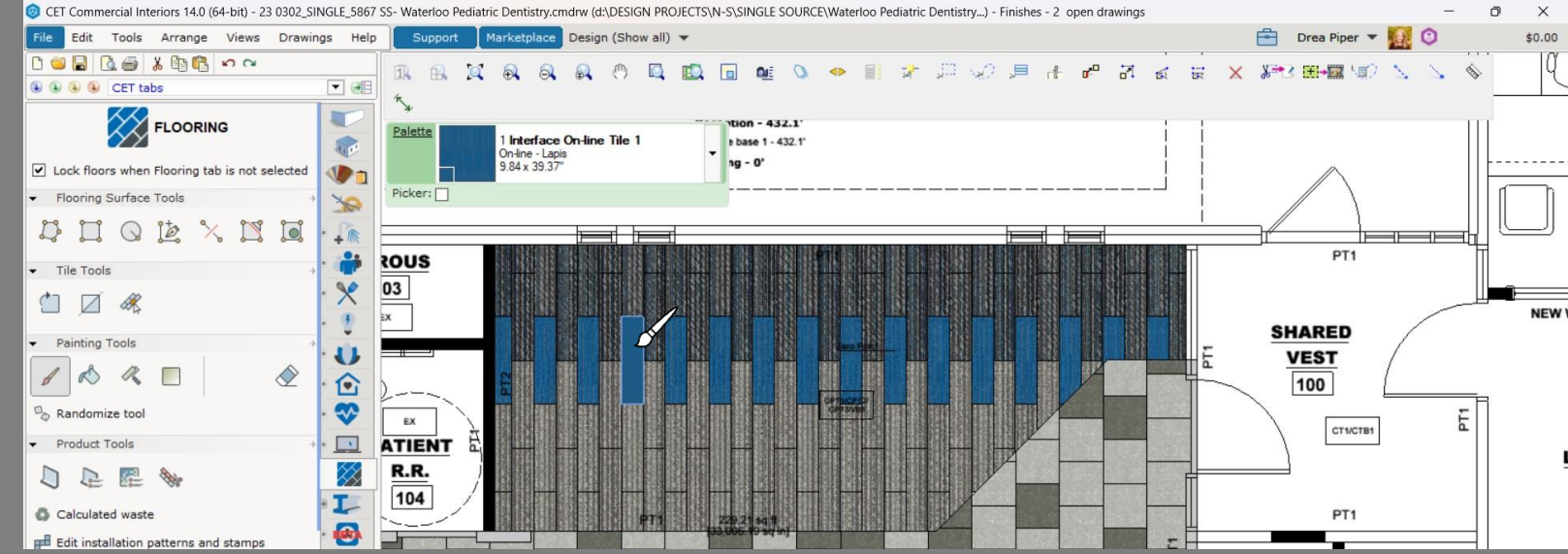
When it comes to placing the selected carpet, I often use the randomizer tool. I can add all the products that will be used in a selected area and apply a ratio. This saves so much time when wanting a random application. Before the flooring extension became available, I would have had to create a material, stitching multiple products together in Photoshop so they were pre-laid out before bringing into CET. This resulted in a huge file and didn't give you a true random appearance.

NEW WAY

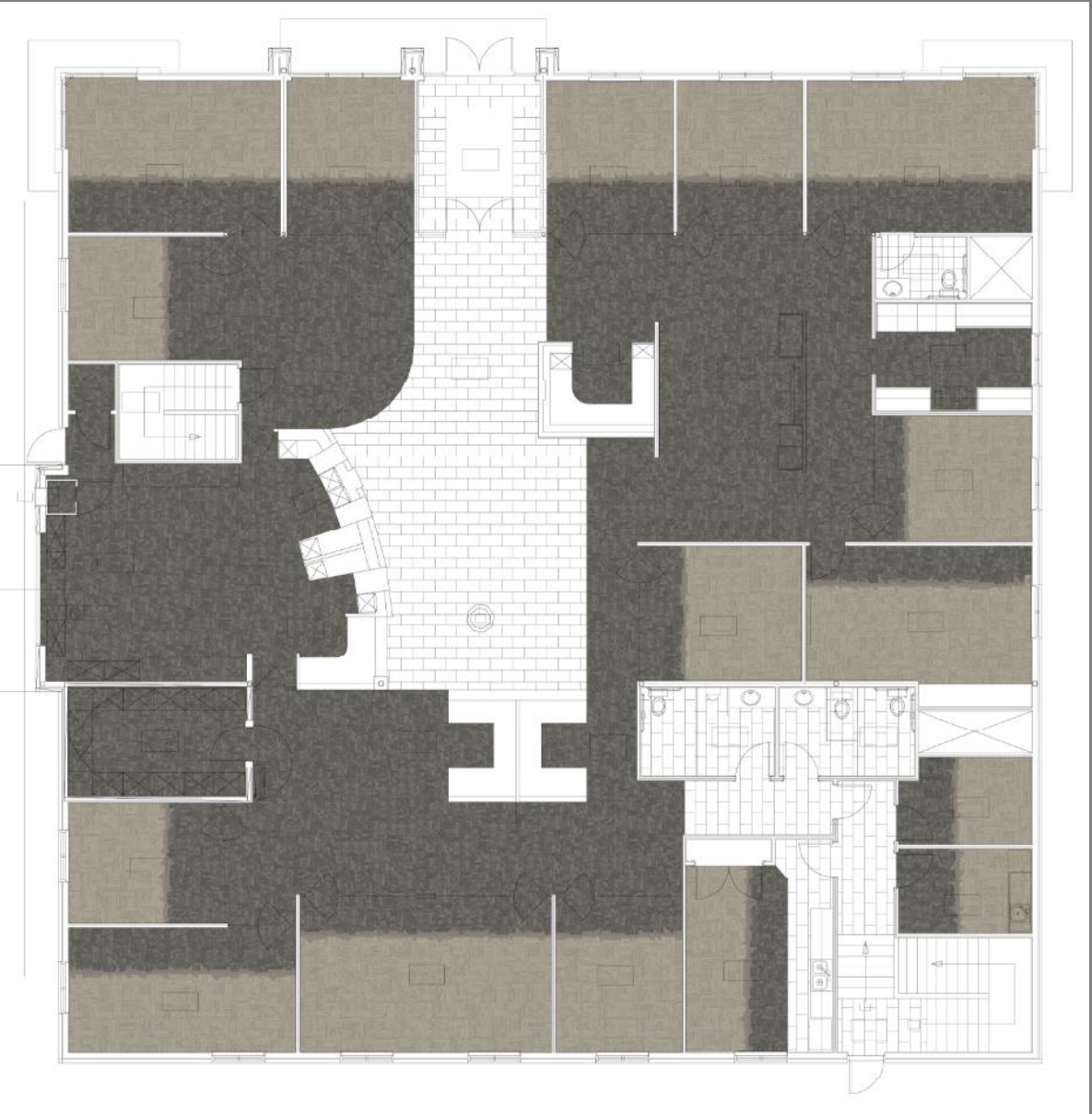


Another part of this extension that makes working with it a huge success is being able to add custom products. There are no limitations to what manufacturer you use and even have the ability to mix manufacturers. Additionally, if certain flooring varies between tiles, you have the ability to add multiple jpgs and the tool will randomize it for you, creating a more realistic looking rendering.

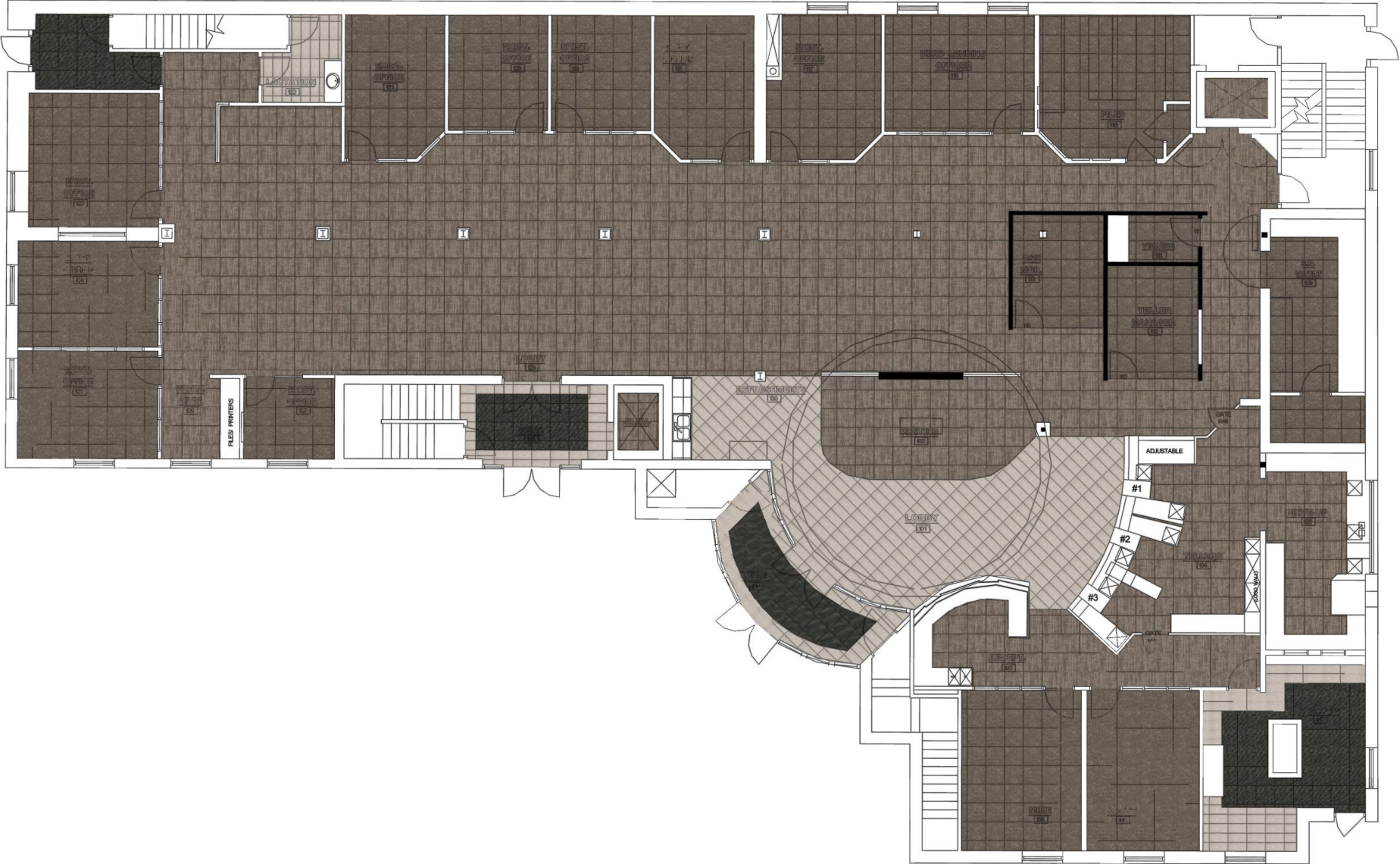
In addition to the randomizer tool, I often use the brush tool. This tool makes it super easy to produce a unique layout with just a click of a button. This was nearly impossible to do prior to having the flooring extension and allowed me to create the deliverables you will see in the following pages.



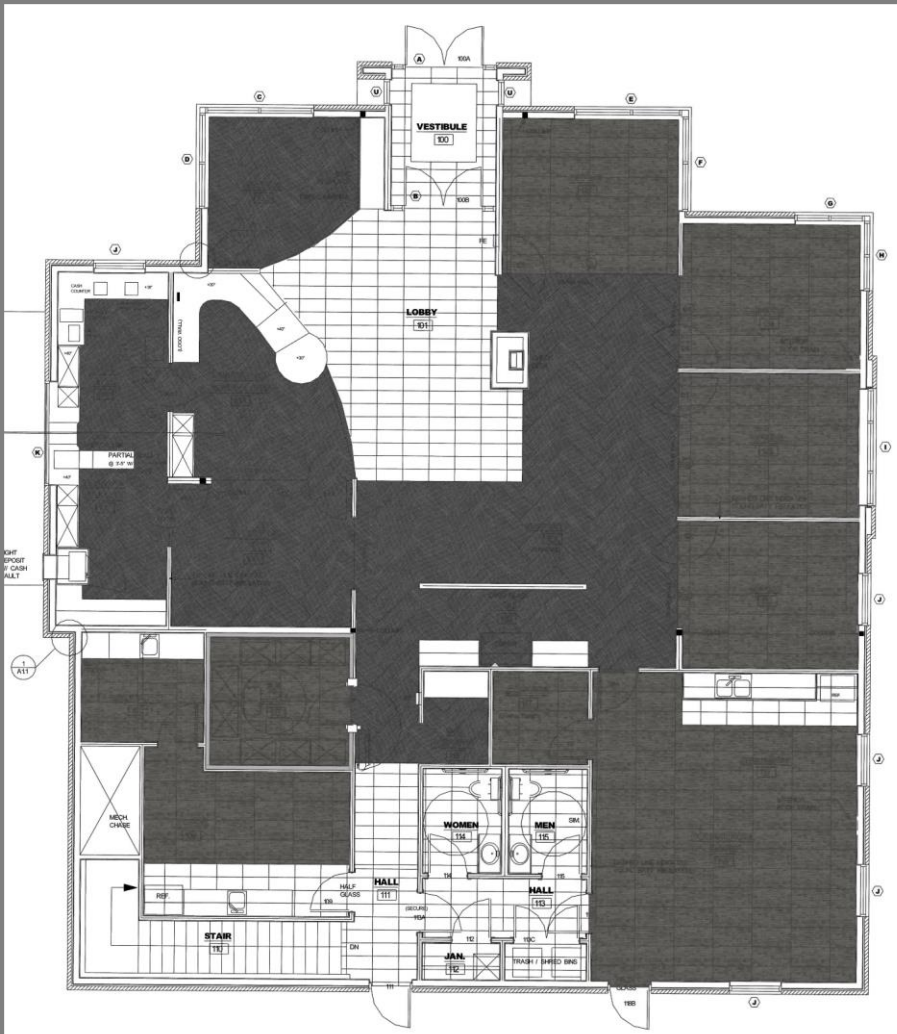
MANUFACTURER RENDERING VS CET RENDERING



- 1 Manufacturer shown
- 7 Day turn-around time
- Added time to make changes



- Multiple manufacturers shown
- Multiple flooring types shown (carpet, ceramic tile, walk-off)
- 1-2 Hour turn-around time
- Easy to make changes



OTHER CET RENDERINGS

As a furniture dealer, flooring is not something we get involved in very often, however, when the opportunity presents itself, it's great to have a tool to use that is already built into the software we use on a daily basis.

